



# BR SERIES

B-type Replacement / Air or Water Cooled Condensing Unit  
Single or Twin Evaporator with Digital Controller



## SYSTEM INFORMATION

The B-type Replacement (BR) Systems are designed to provide refrigerated air to small to medium spaces. BR evaporators were designed to replace other systems of a similar configuration. They are often mounted on a shelf or on the wall within the racking design. Like our other systems these operate on system pressure therefore eliminating the need for control wiring to the condensing unit. This makes for a simpler installation.

BR Systems are available in capacities from 2,600-5,200 BTUH.

## OPTIONS

- Digital controller mounted on the unit or remote mount
- 230v available
- Larger room capacities possible with adding additional evaporators in sequence

## FEATURES

- Title 24 compliant
- Black coated aluminum housing
- Seamless copper tubing throughout
- Universal AXV and liquid line solenoid valve installed standard
- Pre-installed valves eliminate additional wiring
- Coil is coated with water-based epoxy to reduce corrosion

Due to continuing engineering improvements, specifications are subject to change without notice.

\*BTUH is an estimated range based on specific operational criteria.

\*Individual component part numbers are different than a system assembly number.

\*Max Cubic Footage is an estimation assuming No glass, R13 insulation or more, interior ambient temperature of 80° or less, exterior ambient temperature of 95° or less.

# BR SERIES

B-type Replacement / Air or Water Cooled Condensing Unit / Single or Twin Evaporator with Digital Controller

## BR SERIES FAN COIL SPECIFICATIONS

MODEL	CFM	AMPS 115 V	DEPTH	WIDTH	HEIGHT	LIQUID	SUCTION	DRAIN	APPROX SHIP WT.
BR	350	.71	12 3/8"	14 3/16"	19 15/16"	3/8"	3/8"	3/4"	30 lbs

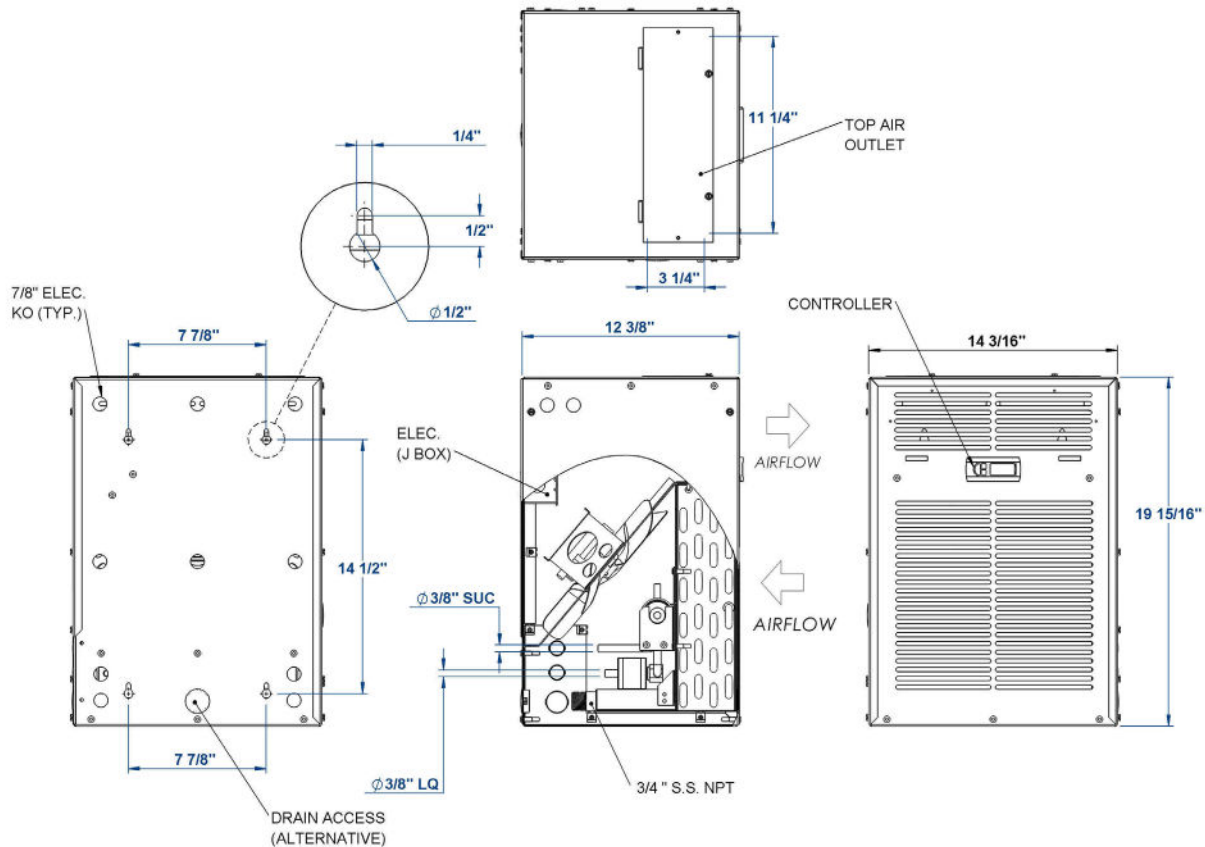
Due to continuing engineering improvements, specifications are subject to change without notice.

\*BTUH is an estimated range based on specific operational criteria.

\*Individual component part numbers are different than a system assembly number.

\*Max Cubic Footage is an estimation assuming No glass, R13 insulation or more, interior ambient temperature of 80° or less, exterior ambient temperature of 95° or less.

## MOUNTING DIAGRAMS

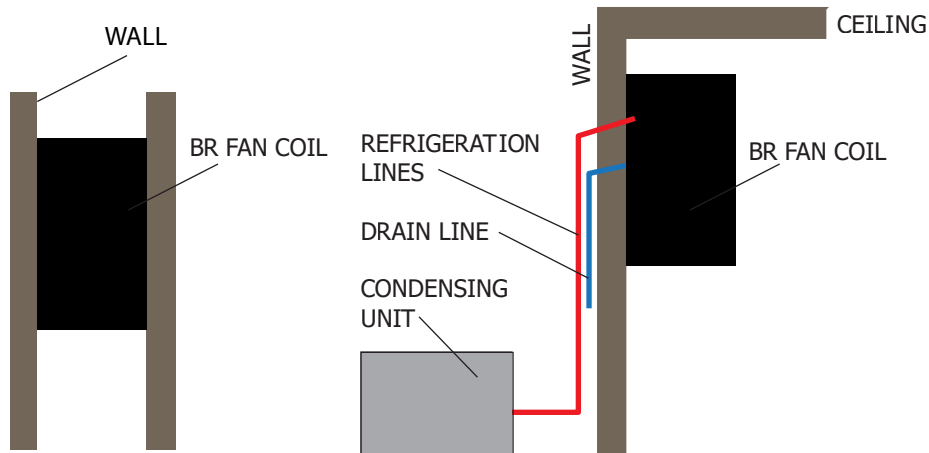


# BR SERIES

B-type Replacement / Air or Water Cooled Condensing Unit / Single or Twin Evaporator with Digital Controller

## BR COOLING SYSTEM TYPICAL INSTALLATION

- Always plan for future maintenance and service. Units should have easy access or access panels. Grills, boxes, or racking nearest the evaporators should be removable.
- Standard Line Sets should be 50' or less. Over 50' an oil separator and suction line accumulator is required. Extended runs may require larger line sizes and 3 oz of oil must be added for every 10' feet over 35'. Insulate suction line, liquid line insulation is optional.
- Excessive number of turns in line set will cause refrigerant flow problems. This could cause early compressor failure. Suction line accumulators are recommended on all applications. Required if working lower than the normal 55°-65°F operating range from wine cellar.
- Drain line must flow with gravity to drain or pump.
- The system is controlled by a pump down control system. There is no control wiring between thermostat and condensing unit.
- The line connections at Fan Coil and Condensing Unit may not be the same as the required line sizes dictated for the system capacity.
- The use of oversized condensing units can lead to poor wine room evaporator performance and possible system failure. When installing our wine room evaporator, it is recommended that condensing units be sized less than or equal to the evaporator capacity.
- USCS Cooling units are designed to minimize noise and vibration. To reduce and eliminate amplification of existing noise or vibration, extreme care must be taken during installation to identify contributing factors in the environment. Please refer to supplied installation instructions and use proper installation materials to minimize acoustic impact.
- Refer to complete installation instructions for additional information or contact our Tech Line at 562-728-5774

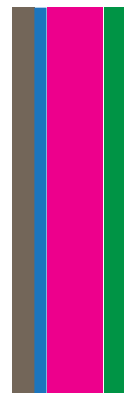


### CEILING CONSTRUCTION



- EXTERIOR
- VAPOR BARRIER  
R 11 MINIMUM
- INTERIOR

### WALL CONSTRUCTION



- EXTERIOR
- VAPOR BARRIER  
R 11 MINIMUM
- INTERIOR